

Aylesbury Canine Training Society

Note new venue



Note new venue

Schedule of

40th Anniversary OPEN AGILITY SHOWS

Held under Kennel Club Rules and Regulations H and H(1) on

Saturday 4th & Sunday 5th August 2007

Shows open 7.30am

Briefings at 8.15am

Judging starts 8.30am

Hog Lane, Ashley Green, Buckinghamshire HP5 3PX

ONLY access to venue is along Hog Lane from A416 at Ashley Green (see map on last page)

ENTRIES CLOSE: Monday 18th June (1st class postmark)

Entries are preferred on-line through 

www.iShowServices.com

Postal Show Entries with Prepaid Fees to:

Aylesbury CTS, c/o Agility Aid,

1 Mare Lane, Beenhams Heath, Shurlock Row, Berkshire RG10 0QH

Entry Enquiries only (8am – 1pm) ☎ 01189 320619

Limited Camping of 280 pitches

Camping Bookings with Prepaid Fee of £18 per pitch to:

Aylesbury CTS on the attached form

Show Manager

Colin Harpley ☎ 07050 015517

agshow.manager@aylesbury-canine.org.uk

Show Secretary

Ann Dormer, 95 Aston Abbotts Road, Weedon, Buckinghamshire HP22 4NH

☎ 01296 640505

agility.show@aylesbury-canine.org.uk

Camping Enquiries only

Kate Lugmayer

☎ 07808 591015

ALL CALLS BEFORE 9pm PLEASE

VET ON CALL - Wheel House Veterinary Centre, Chesham ☎ 01494 782001

(full address on page 5)

Guarantors

Chairman

Gilly Norris, Baytree Cottage, 11 Bletchley Road, Newton Longville, Bucks MK17 0AE

Secretary

Alison Caldwell-Nichols, 217 Aylesbury Road, Bierton, Buckinghamshire HP22 5DS

Treasurer

Alan Bowles, Cobwebs, School Lane, Chearsley, Buckinghamshire HP18 0BT

www.aylesbury-canine.org.uk

ENTRIES ARE LIMITED TO THREE RUNS PER DOG PER DAY

Dogs entered in more than 3 classes will be removed from the highest class

Dogs entered in ANYSIZE may not enter any other class on the same day

SATURDAY

<i>Combined Grades 1 and 2 Jumping</i>	
Class 1	Large
Class 2	Medium
Class 3	Small
<i>Combined Grades 3, 4 and 5 Jumping</i>	
Class 4	Large
Class 5	Medium
Class 6	Small
<i>Combined Grades 6 and 7 Jumping</i>	
Class 7	Large
Class 8	Medium
Class 9	Small
<i>Combined Grades 1 and 2 Agility</i>	
Class 10	Large
Class 11	Medium
Class 12	Small
<i>Combined Grades 3, 4 and 5 Agility</i>	
Class 13	Large
Class 14	Medium
Class 15	Small
<i>Combined Grades 6 and 7 Agility</i>	
Class 16	Large
Class 17	Medium
Class 18	Small
<i>Combined Grades 1-7 Power & Speed specials</i>	
Class 19	Large
Class 20	Medium
Class 21	Small
<i>Combined Grades 1-7 specials</i>	
Class 22	Large NBC Jumping
Class 23	Large ABC Agility
Class 24a	Large Anysize Jumping
Class 24b	Medium & Small Anysize Jumping

SUNDAY

<i>Combined Grades 1 and 2 Jumping</i>	
Class 25	Large
Class 26	Medium
Class 27	Small
<i>Combined Grades 3, 4 and 5 Jumping</i>	
Class 28	Large
Class 29	Medium
Class 30	Small
<i>Combined Grades 6 and 7 Jumping</i>	
Class 31	Large
Class 32	Medium
Class 33	Small
<i>Combined Grades 1 and 2 Agility</i>	
Class 34	Large
Class 35	Medium
Class 36	Small
<i>Combined Grades 3, 4 and 5 Agility</i>	
Class 37	Large
Class 38	Medium
Class 39	Small
<i>Combined Grades 6 and 7 Agility</i>	
Class 40	Large
Class 41	Medium
Class 42	Small
<i>Combined Grades 1-7 Power & Speed specials</i>	
Class 43	Large
Class 44	Medium
Class 45	Small
<i>Combined Grades 1-7 specials</i>	
Class 46	Large ABC Jumping
Class 47	Large NBC Agility
Class 48a	Large Anysize Jumping
Class 48b	Medium & Small Anysize Jumping

Classes may be split if necessary

Trophies to 3rd place Rosettes to 10% Clear Round Rosettes

JUDGES

SATURDAY

Sue Culmer Matt Goodliffe Michele Guerin Cynthia Hart Chris Jenkins Richard Jordon Sue Julian Dennis Macaulay Francis Poulter Helen Saunders Keith Williams

SUNDAY

Richard Brain Terry Condra Iain Fraser Tim Griffiths Malcolm Jones Jenny Lovegrove Reg Rogers Helen Sargent Rosemary Stowers Martine Wates

RESERVES

Doreen Sizeland

Dave Timms

The Committee reserves the right to make changes, and/or additional appointments if necessary

ELIGIBILITY OF CLASSES

This classification should apply to competitions for large, medium and small dogs.

In the following definitions of classes First Prizes or other prize wins are those gained in standard classes at any Kennel Club licensed Open Agility Shows (i.e. Limited Agility Shows, special classes and invitation events excepted). Only a first place with a clear round will count towards grade progression.

Agility classes to include contact points and Jumping classes where there are not contact obstacles. With this proviso classes are defined as follows:-

Class Structure. A Class may either be held as a Graded Class or a Combined Class. A Graded Class may be scheduled for one or more consecutive Grades with separate results and awards issued for each grade. A Combined Class may be scheduled for more than one consecutive grade with one overall set of results.

Progression. Progression from each Grade will require one Agility win or three Jumping wins at that grade, except that progression from Grade 6 will require 4 wins at Grade 6, two of which must be agility classes. Results from Combined Classes will only count towards progression from the dog's current grade.

Points Progression. At the handler's discretion a dog may progress up to Grade 5 by winning 75 points at each grade, using the Agility Warrant points scheme, Regulation K3.c refers, except that there is no requirement for a minimum number of agility points. If this method of progression is selected, the handler must ensure the Show Secretary signs the dog's Agility Record Book at the first show entered at the higher grade. There is no time limit on this progression, however, once a dog has progressed, it cannot return to a previous grade.

STANDARD CLASSES

Only first prizes and points gained in standard classes at Kennel Club licensed Open Agility Shows may be used for progression through the classes. (A dog is only eligible for one grade and one size).

Grade 1 (Elementary) For owners, handlers or dogs which have not gained a first place in an Agility Class or three first places in Jumping Classes at Kennel Club licensed Open Agility Shows. N.B. Owners, handlers or dogs previously qualified out of Grade 1, (Elementary) are not eligible for this class.

Grade 2 (Starters) For owners, handlers or dogs which have qualified out of Grade 1 but have not gained a first place in an Agility Class or three first places in Jumping Classes at Grade 2 at Kennel Club licensed Open Agility Shows, or elected to progress on points from Grade 1. N.B. Owners, handlers or dogs previously qualified out of Grade 2 (Starters) are not eligible for this class.

Grade 3 (Graduate) Open to dogs which are not eligible for Grade 1 or 2 or have elected to progress on points from Grade 2 at Kennel Club licensed Open Agility Shows and dogs which are not eligible for Grade 4, 5, 6 or 7.

Grade 4 (Novice) Open to dogs which have gained a first place in an Agility Class or three first places in Jumping Classes at Grade 3 or elected to progress on points from Grade 3 at Kennel Club licensed Open Agility Shows and are not eligible for Grade 3, 5, 6 or 7.

Grade 5 (Intermediate) Open to dogs which have gained a first place in an Agility Class or three first places in Jumping Classes at Grade 4 or elected to progress on points from Grade 4 at Kennel Club licensed Open Agility Shows and are not eligible for Grade 3, 4, 6 or 7.

Grade 6 (Senior) Open to dogs which have gained a first place in an Agility Class or three first places in Jumping Classes at Grade 5 at Kennel Club licensed Open Agility Shows and are not eligible for Grade 3, 4, 5 or 7.

Grade 7 (Advanced) Open to dogs which have gained a minimum of 4 first places at Grade 6 at Kennel Club Licensed Open Agility Shows, 2 first places must be gained in Agility (not Jumping) Classes.

There is an exception for dogs which were Novice as at 31 December 2006. Dogs which achieved a top 10 place prior to 2006 in Novice or above (but not during 2006) had the option at the beginning of 2007 of competing in the grade achieved, as above, or dropping down one grade to grade 3 or 4 accordingly.

In accordance with Kennel Club Rules, Large dogs which have not competed before 1 January 2006 and ALL Small and Medium dogs must have been officially measured before competing at a Kennel Club licensed Agility Show.

SPECIAL CLASSES

Please listen to briefings for more information.

ABC: Open to large dogs, of any breed except Border Collies, Working Sheepdogs and their Crosses (first cross). Heights as per rule 20

NBC: Open to large Border Collies, Working Sheepdogs and their Crosses (first cross). Heights as per rule 20

For clarity: Please enter into the spirit of these two classes. Collie crosses go into NBC. If in doubt, enter something else!

ANYSIZE: This class is open to any dog not entered in any other class on that day only. It is intended as a fun class for older dogs, new dogs and 'don't fit in anywhere else' dogs, so that all our dogs may enjoy agility shows. For small classes there will be no weaves and no tyre. Heights as per rule 20.

POWER & SPEED: The course will consist of two halves. The first half will consist of contact equipment, plus any of the following at the discretion of the judge: weaves, table, wall, spread, long jump. This section will not be timed. If the "Power" part of the course is negotiated successfully, ie clear round, the handler then proceeds to the "speed" section – a jumping course against the clock.

PRACTICE RING OR PAY ON THE DAY

A practice ring or Pay on the Day competition may be run on the day if time permits. **Please note that equipment in the practice ring may vary without notice throughout the day – working rings have immediate precedence for all equipment.**

SHOW REGULATIONS

Please note this schedule is for two One Day shows – each day
is a separate show licensed separately under Kennel Club Regulations

1. Entries are limited to three runs per dog per day (plus practice ring or POTD if applicable). Dogs entered in more than 3 classes will be removed from the highest individual class.
2. Dogs entered at a Kennel Club licensed agility show must be registered at the Kennel Club in accordance with Kennel Club Regulations for Classification and Registration B. Registration Number or ATC must be shown on each entry form. Record Books for all dogs entered must be available for inspection at the Show if required.
3. The show is a private event. It is not open to the public.
4. Handlers attending the show who bring guests onto the show grounds, must accept responsibility for the guest's behaviour and ensure that the guest abides by the rules.
5. It is the handler's responsibility to ensure that neither they, nor any person in their charge, provoke, startle or upset any animal whether or not in their care.
6. It is the handler's responsibility to ensure that animals in their care are suitably looked after and properly restrained at all times, including all dogs left unattended for whatever length of time.
7. Entries may be made on-line through www.iShowServices.com
8. Entry fees: Electronic entries (via iSS) £2.35 per dog per class. Paper entries £2.55 per dog per class. There is no fee for NFC (non-competing) dogs, but their details **must** be entered on the entry form. If insufficient room, use a second form and staple together
9. The Committee reserves the right to refuse entries.
10. Awards: Place rosettes in all scheduled classes to at least 10% of entries. Trophies to 3rd place in all scheduled classes. Clear round rosettes in all classes. No prize money.
11. Puppies under 18 calendar months of age on the day of the Show are not eligible to compete in Kennel Club licensed agility shows. Not For Competition entries will be accepted for dogs aged four calendar months and over. All dogs must be Kennel Club registered with their details recorded on the entry form or, if applied for, submitted on the day.
12. The mating of bitches within the precincts of the show is strictly forbidden. No bitch in season is allowed to compete.
13. No person shall carry out punitive correction or harsh handling of a dog at any time within the Show boundaries.
14. Dogs must not wear any type of slip, half slip, chain, collars or leads when under test. A flat, close fitting, leather or webbing collar is permitted, providing the only attachment is a plain identification panel as an integral part of the collar, ie not attached by a ring.
15. Should a judge be unable to fulfil the appointment, the Committee reserves the right to appoint another judge.
16. No competitor shall impugn the decision of any judge or judges.
17. Sponsors and trade stands are listed elsewhere in the schedule.
18. It is the competitors' responsibility to be available for their class and running order. Handlers working more than one dog in a class must ensure that the dogs compete in the sequence in which they are drawn. Failure to do so may result in elimination.
19. Height limits for dogs: Large Dogs - for dogs measuring over 430mm (1ft 5ins) at withers. Medium Dogs - for dogs measuring over 350mm(1ft 1¼ ins) and measuring 430mm(1ft 5ins) or under at the withers. Small Dogs - for dogs measuring 350mm(1ft 1¼ins) or under at the withers.
20. Jump heights: Large dogs 650mm, Medium dogs 450mm, Small dogs 350mm. Anysize Large 350mm, Anysize Small and Medium 200mm. Small or Medium must be specified on the entry form.
21. Food and toys shall not be carried in the hand or given to a dog in the ring.
22. In estimating the number of awards won, all wins up to and including seven days before the close of entries, ie Monday 11 June, shall be counted.
23. Marking: Kennel Club Standard Marking Regulations will apply in all standard classes. Special classes also use these rules unless detailed otherwise at briefing.
24. Judges at an Agility Show may not enter for competition a dog which is recorded in their ownership, or part ownership, or handle a dog at the show which they are judging.
25. Reserve judges may be appointed at the discretion of the Committee.
26. A dog shall be withdrawn from competition if it is: a) a bitch in season; b) suffering from or has been exposed to any infectious or contagious disease within 21 days prior to competition; c) interfering with the safety or chance of winning of an opponent; d) of such a temperament or is so much out of hand as to be a danger to the safety of any person or other animal; e) likely to cause suffering to the dog if it continues to compete.
27. Should circumstances dictate, the society, in conjunction with the judges may alter arrangements as necessary. Such changes and circumstances surrounding them will be reported to the Kennel Club.
28. A dog must, at the time of entry for competition, be registered as required by the Kennel Club rules and regulations in the competitors name (or registration or transfer applied for). In the case of a partnership the full name of every partner must be given. In the case of dogs recorded as owned by a limited company, the directors and secretary of the limited company will jointly be considered for the purpose of the regulations. A dog acquired, subsequent to entry having been made at a competition, may compete as the new owners property, provided that an application for the transfer has been forwarded to the Kennel Club before the competition and the new owner has undertaken to abide by the regulations and conditions printed herein.
29. No animal, other than one officially entered, shall be brought into the precincts of the event during its continuance, except a registered assistance dog or dogs required for educational or instructional purposes or by permission of the General Committee.
30. All dogs entered at the show are at the owner's risk. Whilst every care will be taken, the Committee will not accept responsibility for loss, damage or injury, however caused, to dogs, persons or property whilst at the show.
31. No dog will be allowed in the competition rings at any time except whilst competing. Training in the competition rings during or after the show is not allowed.
32. Competitors may walk the course prior to commencement of the classes, but must not be accompanied by a dog.
33. In the event of abandonment of the show through circumstances beyond the control of the Committee, expenses may be defrayed from the entry fees to cover the cost of show preparation.
34. Paper entries must be made on the official ACTS entry form or a photocopy of this. Incorrect entries will be returned.
35. **Dog Fouling:** Any owners, competitor, or other person in charge of a dog is required to remove, as soon as possible, any fouling caused by their dog(s) at any Kennel Club Licensed event within the licensed venue and within the environs of that event including car parks, camping areas, exercise areas and their approaches.
36. **Exercise Area:** A maximum of three dogs per handler may be exercised off lead at any one time. For safety, please do not throw toys in the vicinity of the Show, including the exercise area. It is the handler's responsibility to keep their dog(s) under control and not to interfere with others in this area. Use of any exercise area provided is strictly at the handler's own risk.

CAMPING REGULATIONS

Applications for camping must be made directly to
Aylesbury CTS on the enclosed form

You WILL need to produce your Numbered Camping Pass on arrival – no exceptions

- Limited camping to 280 pitches.
- No arrival before 16:30 or after 22:00 on Friday, or before 07:00 Saturday. Leave site by 19:00 Sunday
- Camping as directed by marshals only (any problems see Show or Camping Manager, not marshals; they are volunteers, and cannot change units around).
- Campers must keep to their marked pitch and must NOT obstruct any roadways by any means (including but not limited to: vehicles, table & chairs, children's toys, bikes, training equipment, BBQs etc).
- All units must have adequate facilities for first aid and fire fighting (buckets of water are NOT sufficient). Fire Equipment to be external to unit for easy access (out of date equipment is not acceptable).
- Be sensible and adopt standard camping practice of boiling all water before drinking.
- All waste (including grey water) to be disposed of at allocated points only. **Do not** empty grey water onto the ground.
- All generators (whether in use or not) must have a fire extinguisher close at hand ready for use & be suitably cordoned off. Private generators **must** be attended whilst in use, which is not permitted before 8am or after 8pm daily.
- Open fires are **NOT** permitted.
- Mast, flagpoles or other high items are not allowed on pitches with overhead power lines.
- BBQs may only be used in the open air, never left unattended, and must have a fire extinguisher close at hand ready for use (if you do not have a fire extinguisher you cannot have a BBQ).
- All BBQs must be raised at least 2 feet off the ground to prevent scorching of grass.
- It is the occupant's responsibility to make sure their pitch is clean and tidy during use and on vacating.
- ***If you are not prepared to be bound by ALL of these regulations, please do not enter the show.***

Order of judging will be sent out with the running orders.

Catering and refreshments supplied by *Chubby's* will be available periodically, on Friday evening 5-8pm, Saturday 7am to 8pm and Sunday 7am to 4pm. There will be **NO** licensed bar.

Trade stands and dog micro-chipping services will be available.

Musical entertainment will be provided on Saturday evening.

A Tombola will be held each day in aid of Chiltern Air Ambulance, so please bring some cash and buy generously. ***Donations of prizes for inclusion will be very welcome.***

We hope you enjoy our show. Have a great day and remember, Agility is Fun!

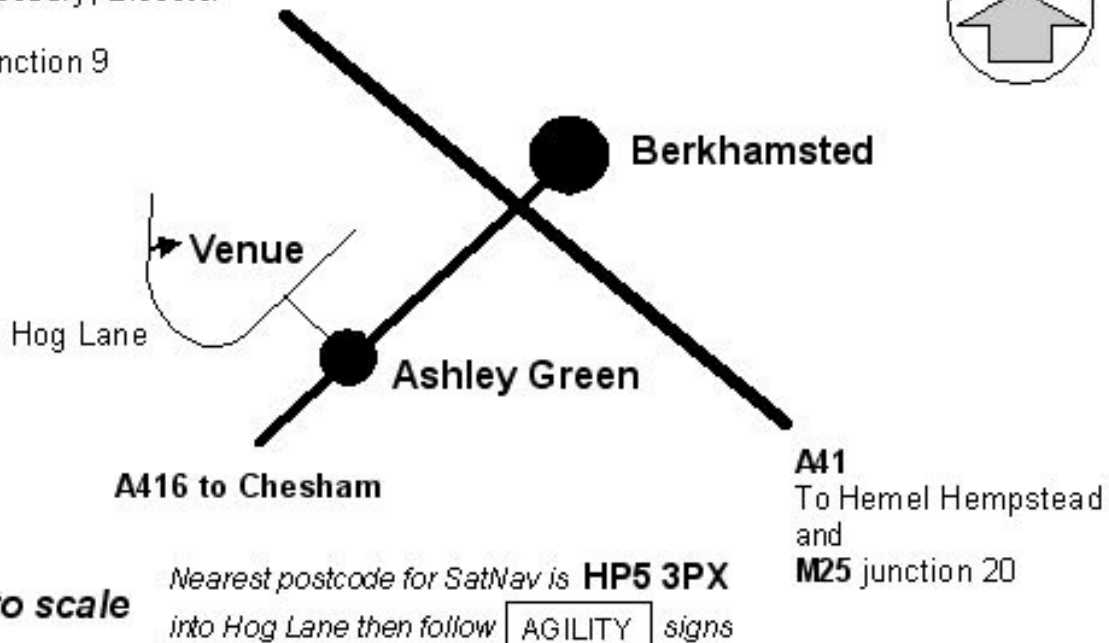
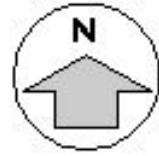
Vet on call: Wheel House Veterinary Centre
Amersham Road, Chesham HP5 1NQ
01494 782001

Handlers/owners will be entirely responsible for any fees or expenses incurred

Nearest 24 hour casualty department: Stoke Mandeville Hospital
Follow A41 towards Aylesbury then pick up **H** signs (16 miles)

A41

To Aylesbury, Bicester
and
M40 junction 9



Not to scale

Nearest postcode for SatNav is **HP5 3PX**
into Hog Lane then follow **AGILITY** signs

Access to venue is off Hog Lane, accessed off A416 in the village of Ashley Green midway between Berkhamsted and Chesham. Follow **AGILITY** signs

Nearest postcode for those using GPS satnav or mapping software is **HP5 3PX**

Please note that camping access will only be permitted to those able to produce on arrival a valid, numbered ACTS Camping Pass.

NO SPECIAL ARRANGEMENTS for camping will be entered into, other than as approved in advance by the Camping Manager.

With grateful thanks to our sponsors and trade stands

Oscar Pet Foods

Microchipping service. Quality feeds, range of treats, health care products and training aids

Waggitt

Large range of clothing, dog leads, collars and equipment
www.waggitt.co.uk

DoggySnackShack

Every type of unusual and noxious snack that humans hate and dogs love! Suppliers of Nupro joint supplement

The Barkery

Home baking for dogs

Pics-4-U photography

Professional digital photography specialising in animal portraits, prints available on the day
www.pics-4-u.co.uk

Kookaburra Coffee

Fresh speciality coffees, teas and hot chocolate

Smothers & Shakers

Ice-cold fresh made fruit smoothies and milkshakes

www.cheapergreenerfuel.com

save 7-14% on your fuel costs : petrol or diesel